

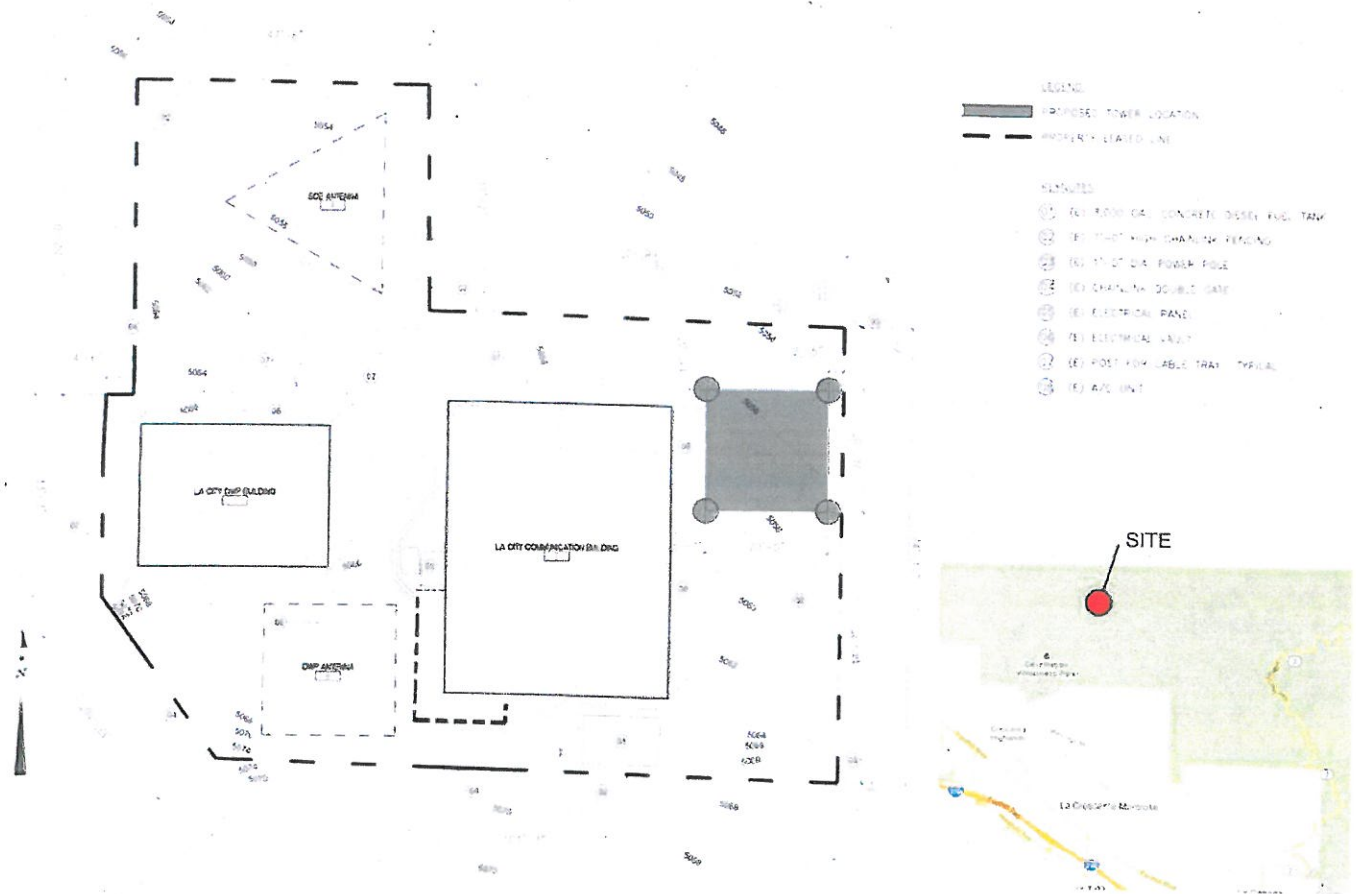


JUSTICE ASSISTANCE GRANT- MOUNT LUKENS PROJECT FACT SHEET

PROJECT: Mount Lukens
ADDRESS: 5150 Mount Lukens Road
 Tujunga, CA 91042

COUNCIL DISTRICT 2: Paul Krekorian
BUREAU OF ENGINEERING: Bond Program Division

DESCRIPTION: Construct a new 110'-0" tall self-supporting tubular steel quadrangular (4 leg) communications tower within an existing City of LA communications facility atop Mount Lukens located within the Angeles National Forest. The proposed project will upgrade the mobile data systems used by the City of Los Angeles public safety first responders providing better interoperability and strengthen disaster recovery capability. The proposed improvement will be constructed in public land operated by the City of Los Angeles which already has a facility used by the City's Information Technology Agency for police, fire and emergency communications.



MOUNT LUKENS COMMUNICATIONS TOWER
 5150 MOUNT LUKENS ROAD, TUJUNGA, CA 91042



SITE PLAN

MOUNT LUKENS
 COMMUNICATIONS TOWER
 5150 MOUNT LUKENS ROAD
 TUJUNGA, CA. 91042

SPIRANO + MOONEY ARCHITECTURE, INC.
 642 WILSON AVENUE, SUITE 404 LOS ANGELES CALIFORNIA 90017
 PHONE: 323.221.6600 FAX: 323.221.7801 EMAIL: INFO@SPIRANOMOONEY.COM

DATE: 26 JAN 12
 JOB NO.: 1300
 SCALE: AS NOTED
 REV. NO.:
 SKETCH NUMBER:
1

